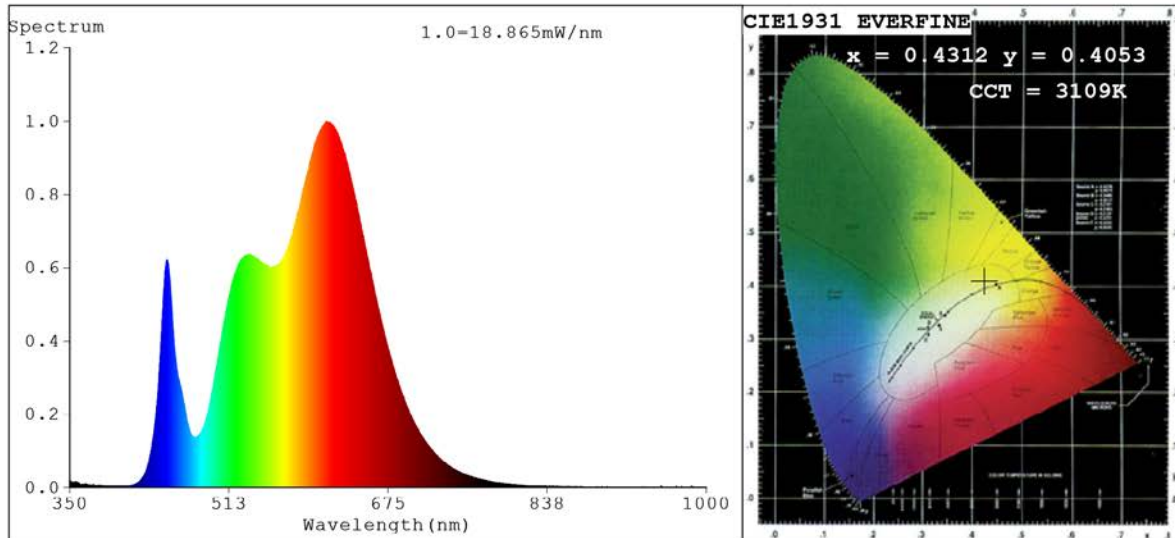


Spectrum Test Report



Color Parameters:

Chromaticity Coordinate: $x=0.4312$ $y=0.4053$ $u'=0.2464$ $v'=0.5210$
CCT=3109K(Duv=0.0013) Dominant WL:Ld =581.9nm Purity=51.1%
Ratio:R=24.1% G=73.6% B=2.3%;;Peak WL:Lp=612.1nm FWHM=153.3nm
Render Index:Ra=92.8 CRI=88.8 TM30:Rf=90 Rg=101
R1 =95 R2 =95 R3 =94 R4 =95 R5 =94 R6 =95 R7 =93
R8 =81 R9 =51 R10=87 R11=93 R12=78 R13=96 R14=96 R15=88

Photo Parameters:

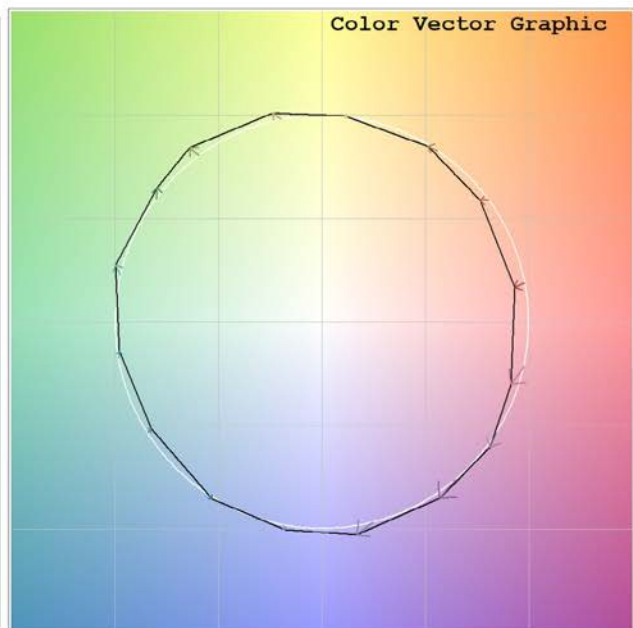
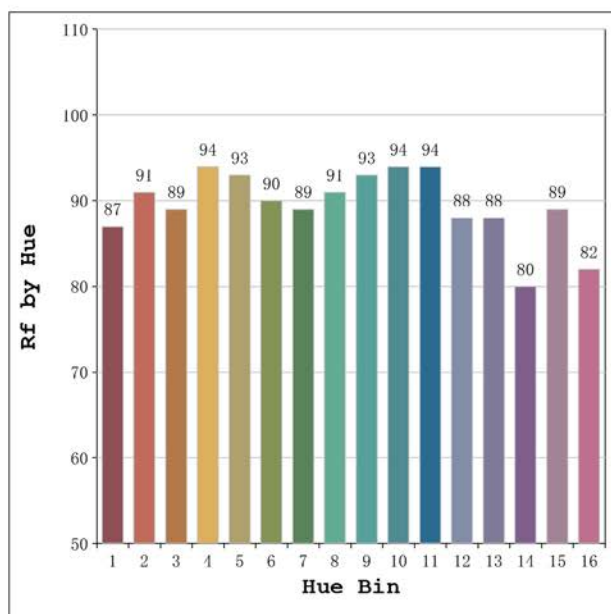
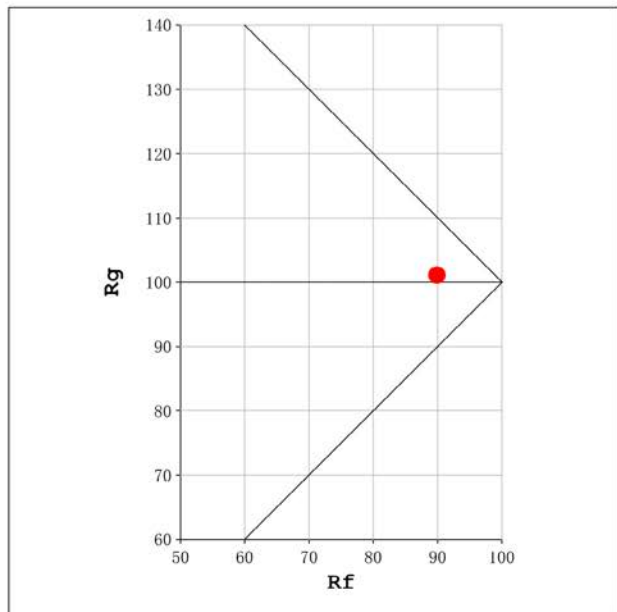
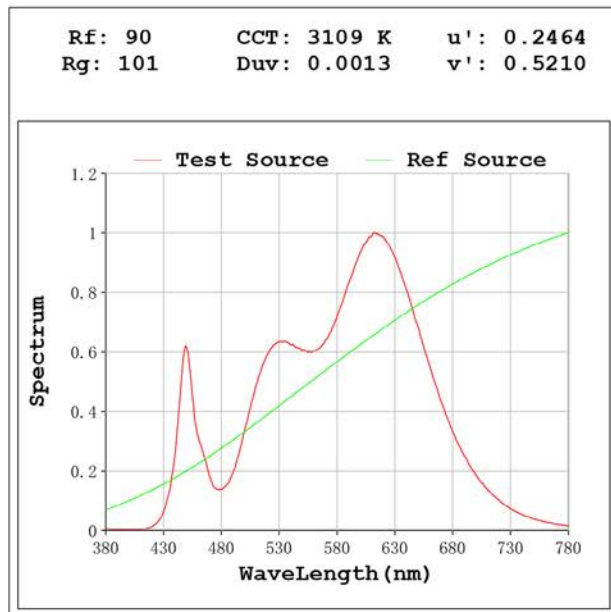
Flux = 911.0 lm Eff. : 89.20 lm/W Fe = 2.917 W

Electrical parameters:

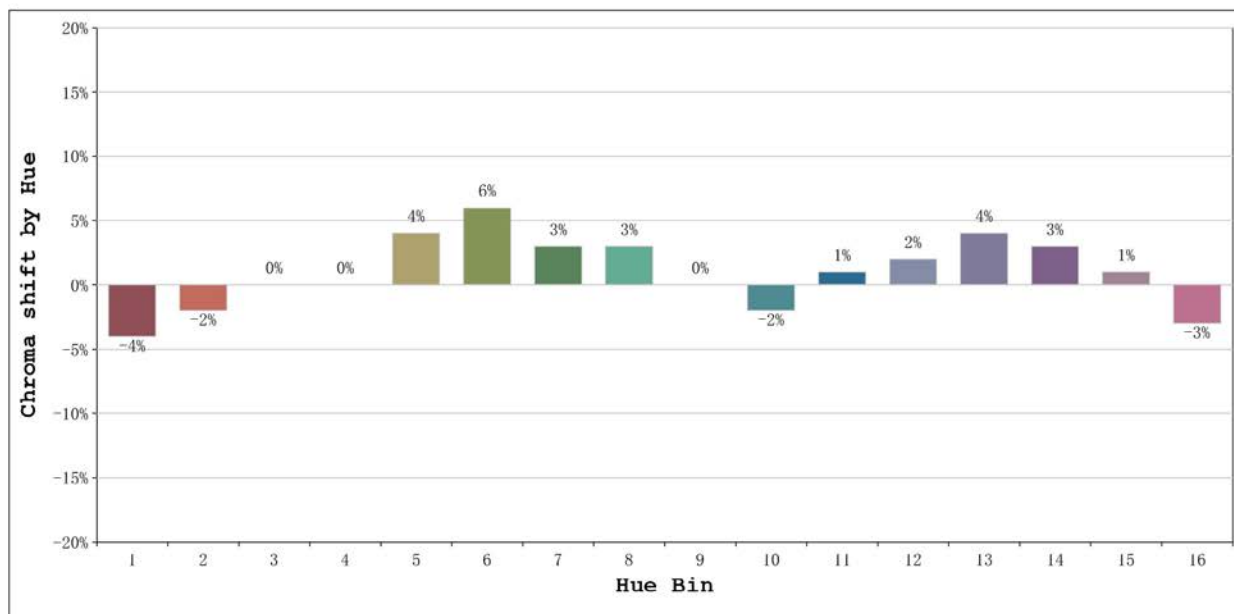
V = 23.998 V I = 0.4256 A P = 10.21 W PF = 1.000

Status: Integral T = 1401 ms Ip = 50583 (77%)

Model:Ecoled Élite Gold Slim 3000	Number: 31.168
Tester:Sergio Carneros	Date:2024-12-17 15:10:40
Temperature:27Deg	Humidity:40%
Manufacturer:Luz Negra S.L	Remarks:100cm de tira flexible



Model:Ecoled Élite Gold Slim 3000 Number: 31.168
 Tester:Sergio Carneros Date:2024-12-17 15:10:40
 Temperature:27Deg Humidity:40%
 Manufacturer:Luz Negra S.L Remarks:100cm de tira flexible



			Graphic shift(%)	
Hue Bin	Hue Angle	Rf	Chroma	Hue
1	0.0° - 22.5°	87	-4	-1
2	22.5° - 45.0°	91	-2	2
3	45.0° - 67.5°	89	0	5
4	67.5° - 90.0°	94	0	2
5	90.0° - 112.5°	93	4	4
6	112.5° - 135.0°	90	6	2
7	135.0° - 157.5°	89	3	-4
8	157.5° - 180.0°	91	3	-3
9	180.0° - 202.5°	93	0	-2
10	202.5° - 225.0°	94	-2	0
11	225.0° - 247.5°	94	1	3
12	247.5° - 270.0°	88	2	1
13	270.0° - 292.5°	88	4	-8
14	292.5° - 315.0°	80	3	-10
15	315.0° - 337.5°	89	1	-7
16	337.5° - 360.0°	82	-3	-9

Model:Ecoled Élite Gold Slim 3000 Number: 31.168
 Tester:Sergio Carneros Date:2024-12-17 15:10:40
 Temperature:27Deg Humidity:40%
 Manufacturer:Luz Negra S.L Remarks:100cm de tira flexible